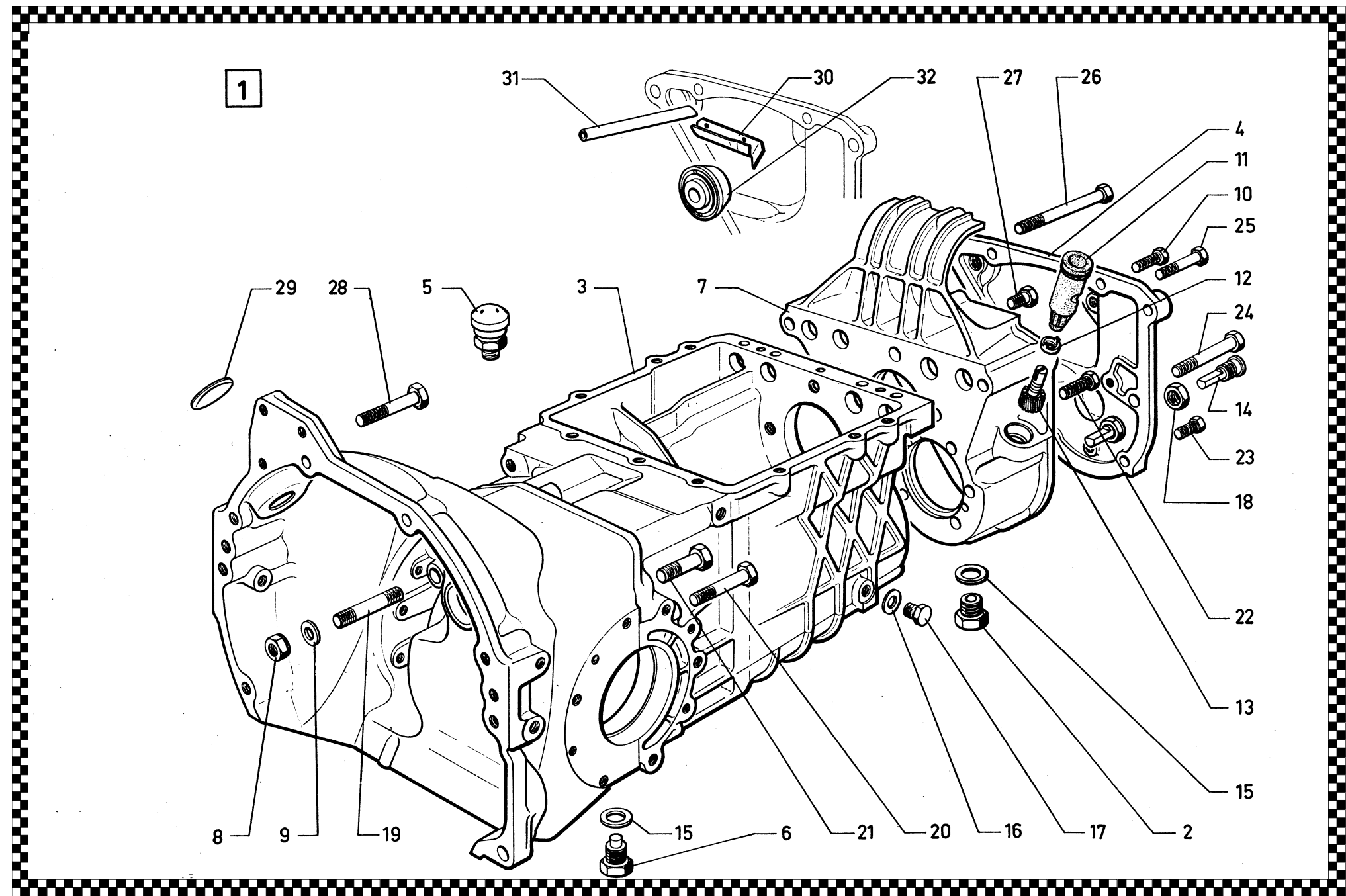


Part ID	Description						
1	Five-Speed gearbox crown wheel	11	Nylon socket for speed-	21	Screw	31	Tube
2	Plug	12	Cup	22	Screw	32	Deflector
3	Gearbox and clutch housing	13	Pinion f. speedometer	23	Screw	33	s
4	Front cover	14	Stop for pinion	24	Screw	34	
5	Breather	15	Joint	25	Screw	35	
6	Air vent	16	Level plug oint	26	Screw	36	
7	Drain plug	17	Screw (level plug)	27	Screw	37	
8	Front housing	18	Nut for stop	28	Screw	38	
9	Nut	19	Stud	29	Plug	39	
10	Centering screw	20	Screw	30	Plate	40	



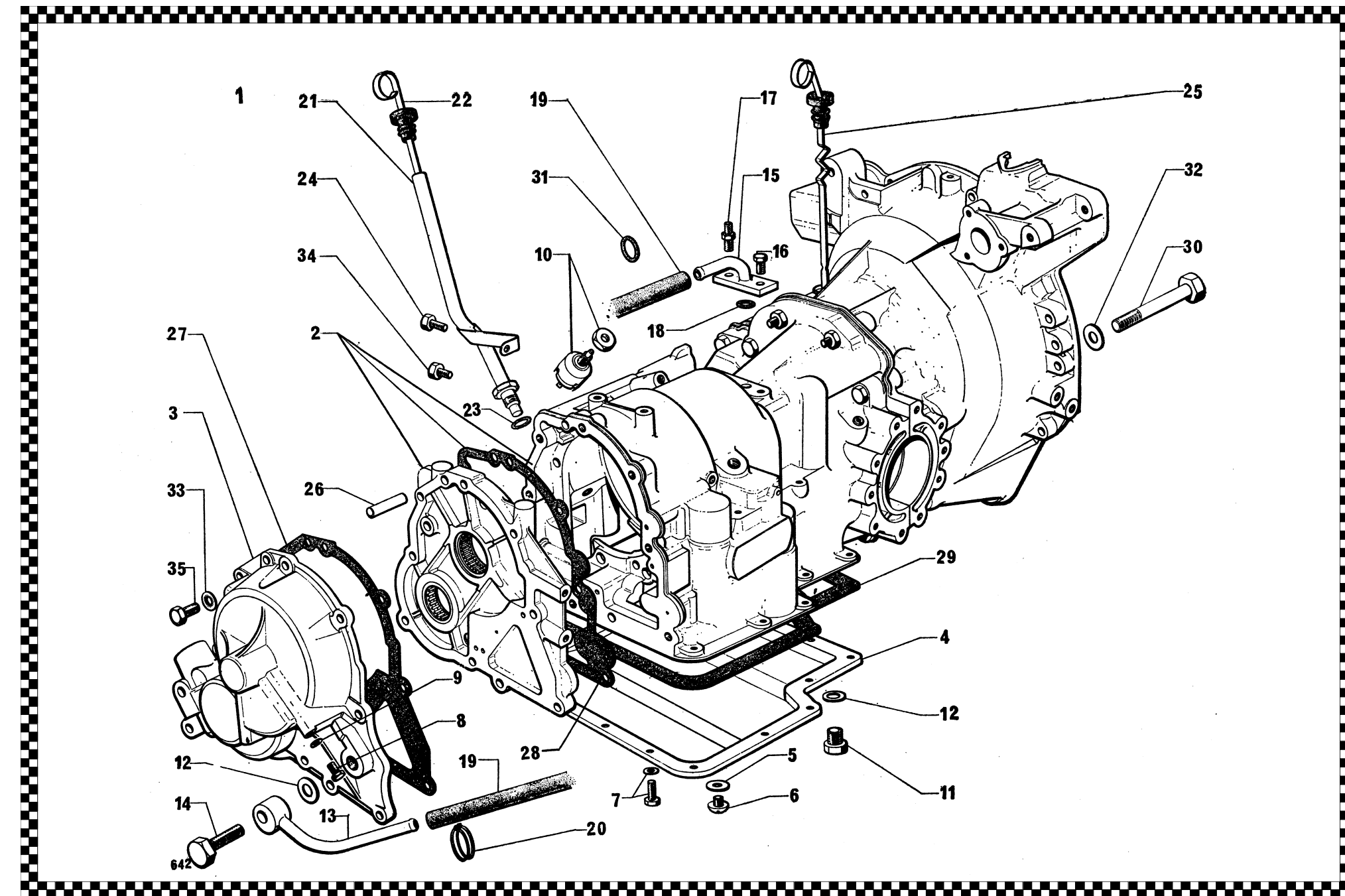
Group 1: Gearbox housing



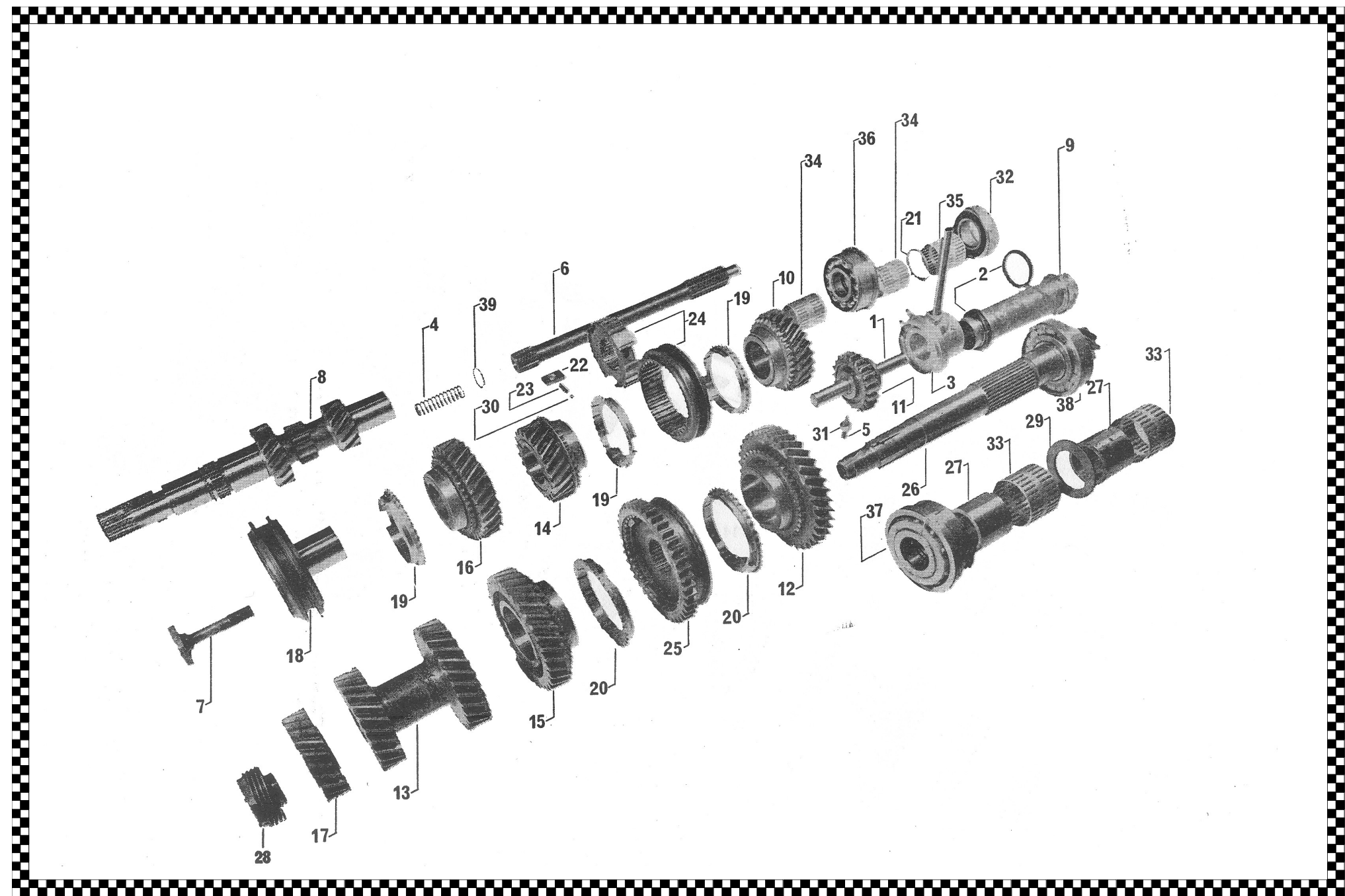
Part ID	Description						
1	Gearbox complete	11	Drain plug	21	Dipstick tube	31	Ring seal
2	Housing with piston for servo-control	12	Seal	22	Dipstick	32	Washer
3	Housing with needle bearing	13	Swiveling union	23	Seal f. tube	33	Sealing washer
4	Oil sump	14	Union screw	24	Tube screw	34	Plug on pressure offtake
5	Sealing washer	15	Flange with pipe	25	Oil dipstick f. differ-	35	screw
6	Drain plug	16	Flange screw	26	Housing pin	36	
7	Screw and washer	17	Shouldered screw	27	Sealing	37	
8	Front housing plate	18	Ring seal	28	Sealing	38	
9	Copper gasket	19	Pipe f. exchanger	29	Sealing f. oil sump	39	
10	Safety switch for starter motor	20	collar	30	screw	40	



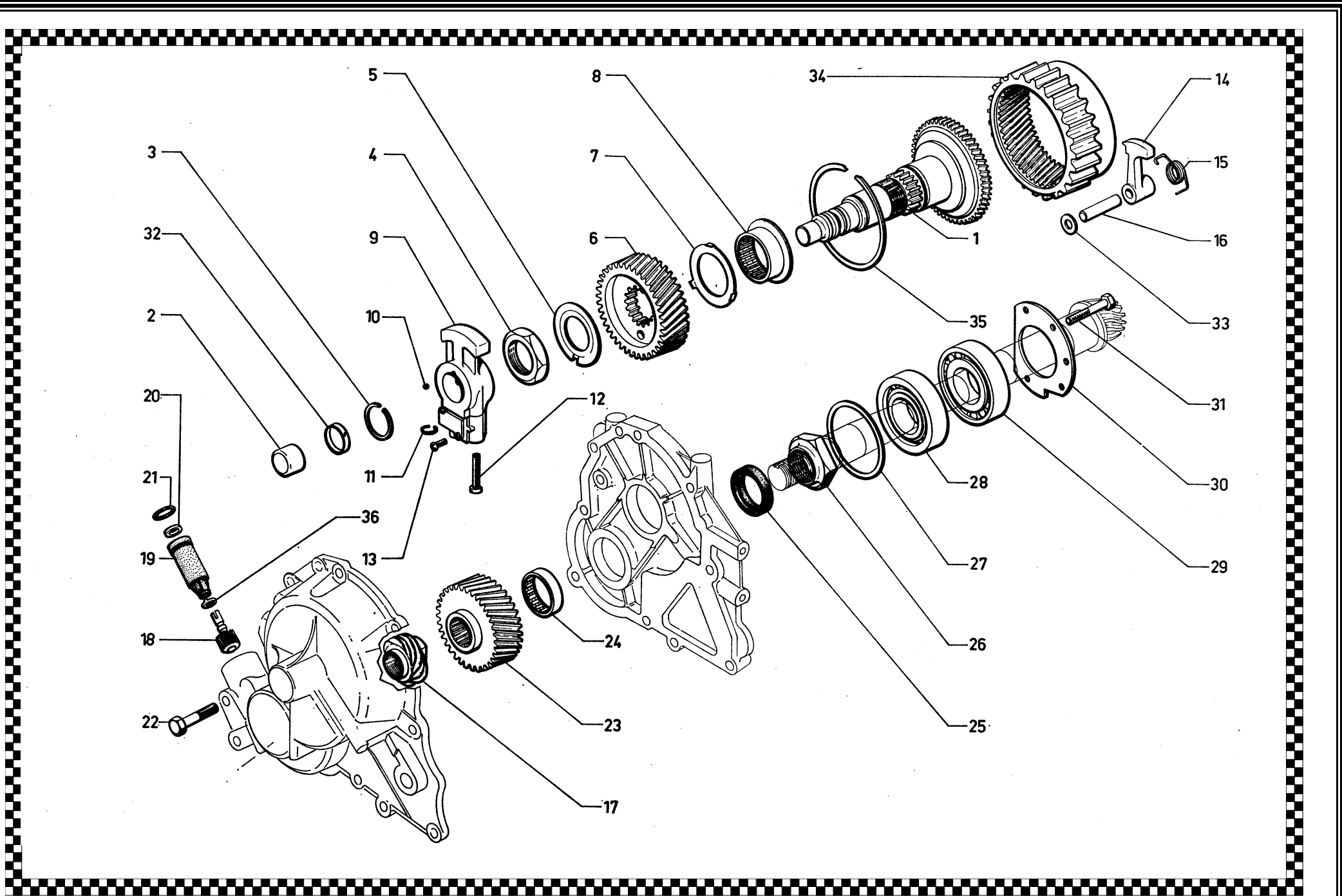
Group 1: Gearbox housing (auto)



Part ID	Description						
1	Reverse gear shaft	11	Sliding reverse pinion	21	Stop ring	31	Nut
2	Sealing joint	12	Idler pinion (1st speed) 38 teeth	22	Setting pin	32	Ball bearing
3	Oil return flange with pipe	13	Intermediate train, 32x37 teeth	23	Ball spring	33	Needle cage
4	Drive shaft spring	14	Drive pinion for 4th 33 teeth	24	Snychro, (3rd and 4th) complete	34	Needle cage
5	Locking screw f. spindle	15	Idler pinion (2nd) 33 teeth	25	Synchro (1st and 2nd), 41 teeth	35	Needle cage
6	Drive shaft	16	Driving pinion f. 5th, 37 teeth	26	Crown wheel and pin-ion	36	Ball bearing, double
7	Locking screw	17	Driving pinion f. 5th, 28 teeth	27	Distance bush	37	Ball bearing, double
8	Primary shaft 17x13x13 teeth	18	Synchro(5th)	28	Nut for pinion shaft 5 threads	38	Roller bearing
9	Support tube f. stop	19	Synchro 5th	29	Adjusting washer	39	Stop ring
10	Drive pinion for 3rd, 28 teeth	20	Snchro ring (1st snd)	30	Synchro-ball	40	



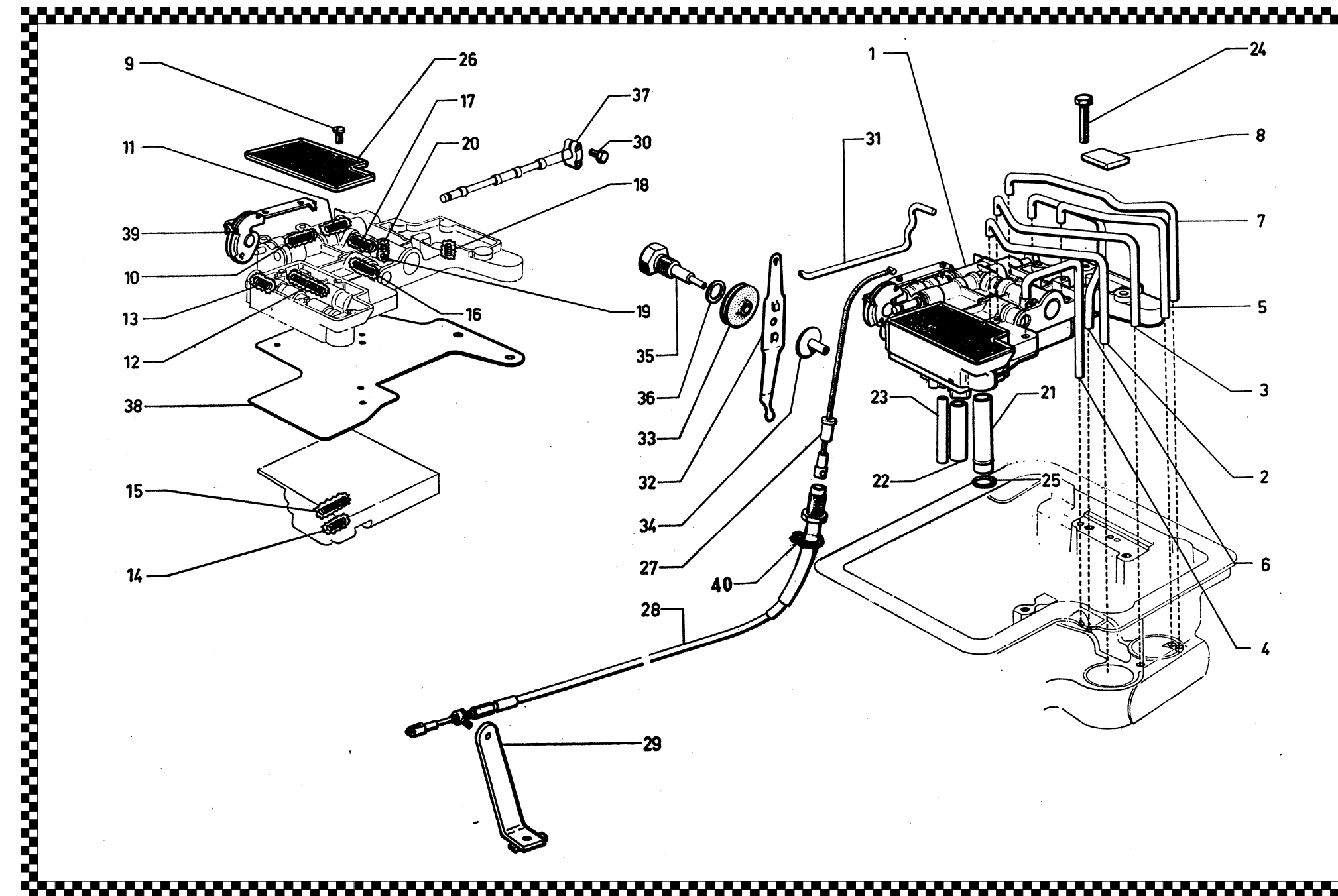
Part ID	Description						
1	Drive shaft	11	Circlip	21	Ring seal	31	Screw
2	Needle bearing	12	Screw and washer	22	Screw	32	Seal
3	Circlip	13	Screw and washer	23	Transfer pinion	33	Distance washer
4	Nut	14	Parking pawl	24	Needle bearing	34	Gear ring
5	Stop washer	15	Spring	25	Sealing	35	Circlip
6	Pinion	16	Pawl pin	26	Nut	36	Cup
7	Stop washer	17	Speedometer screw	27	Shim	37	
8	Bearing	18	Speedometer pinion	28	Bearing	38	
9	Regulator	19	Speedometer-drive	29	Roller bearing	39	
10	Ball	20	Seal f. socket	30	Schaft plate	40	



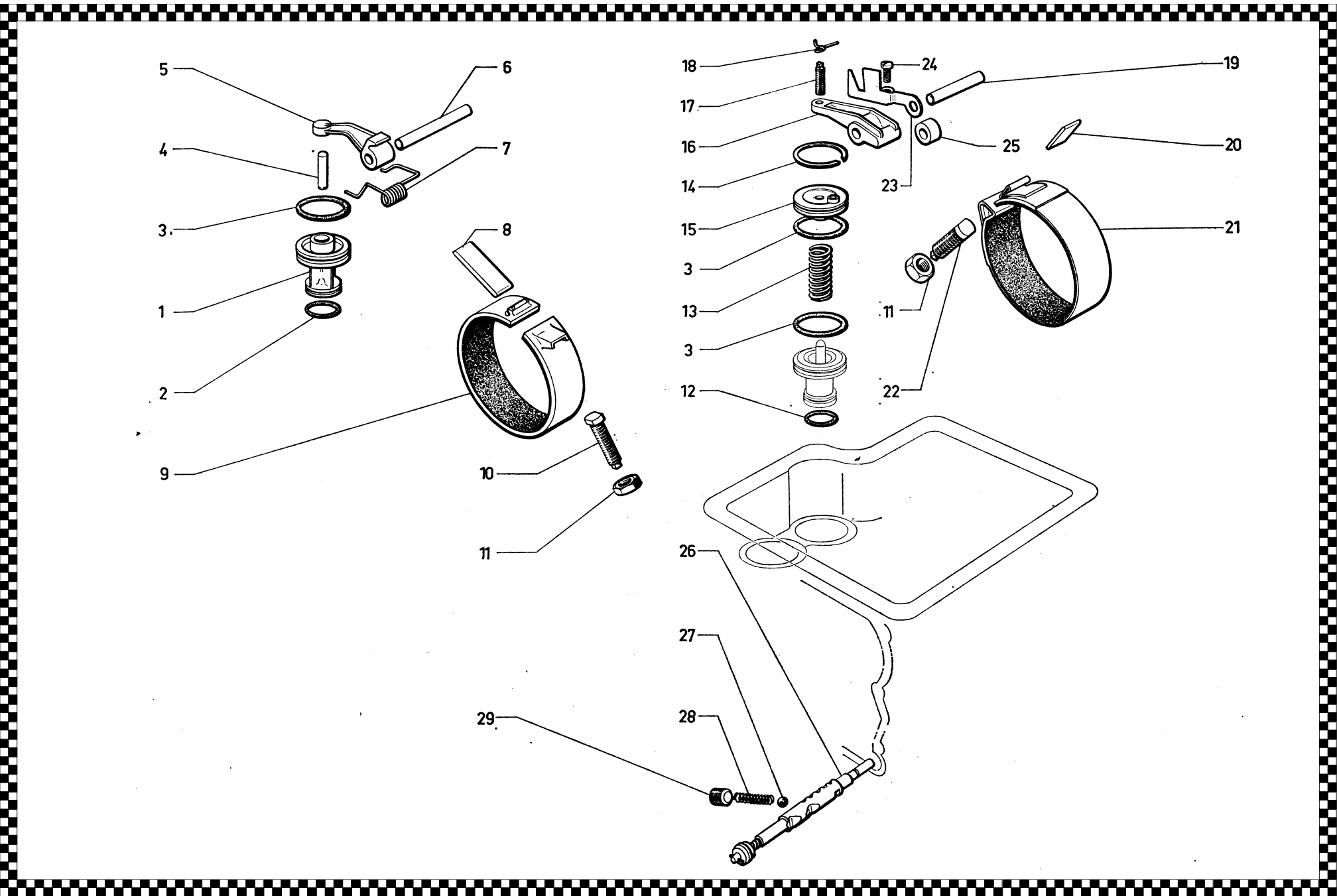
Part ID	Description						
1	Hydraulic selector	11	Valve spring (28 turns)	21	Tube	31	Rod
2	Tube f. front servo	12	Spring f. secondary regu-	22	Tube	32	Lever
3	f. front servo	13	Spring f. primary regula- tor (14 turns 1/2)	23	Tube	33	Sheave
4	f. lubrication	14	Selection spring 1st-2nd	24	Screw	34	Hub
5	f. rear servo	15	Selection spring 2nd-3rd	25	Sealing ring	35	Lever pin
6	f. rear coupling	16	Servo-control spring (24 turns)	26	Strainer	36	Seal
7	f. reverse gear servo	17	Valve spring, 19 turns	27	Cable, gearbox side	37	Flange
8	Magnet	18	Pump control spring	28	Cable pedal side	38	Partition plate
9	Screw	19	Ball	29	Cable bracket	39	Cam
10	Valve spring (18 turns)	20	Spring f. control No 3	30	screw	40	circlip



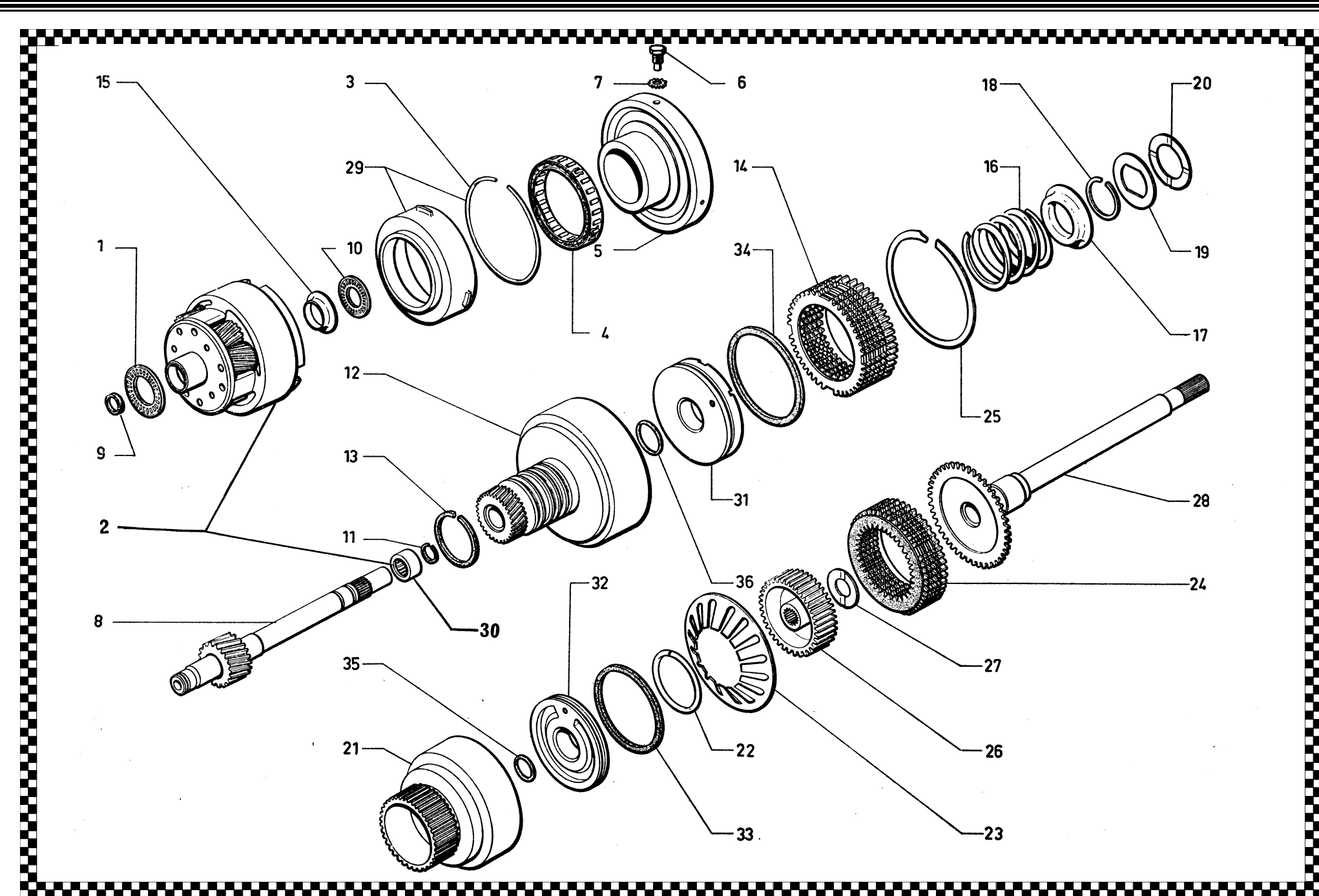
Group 1: Gearbox Hydraulic selector



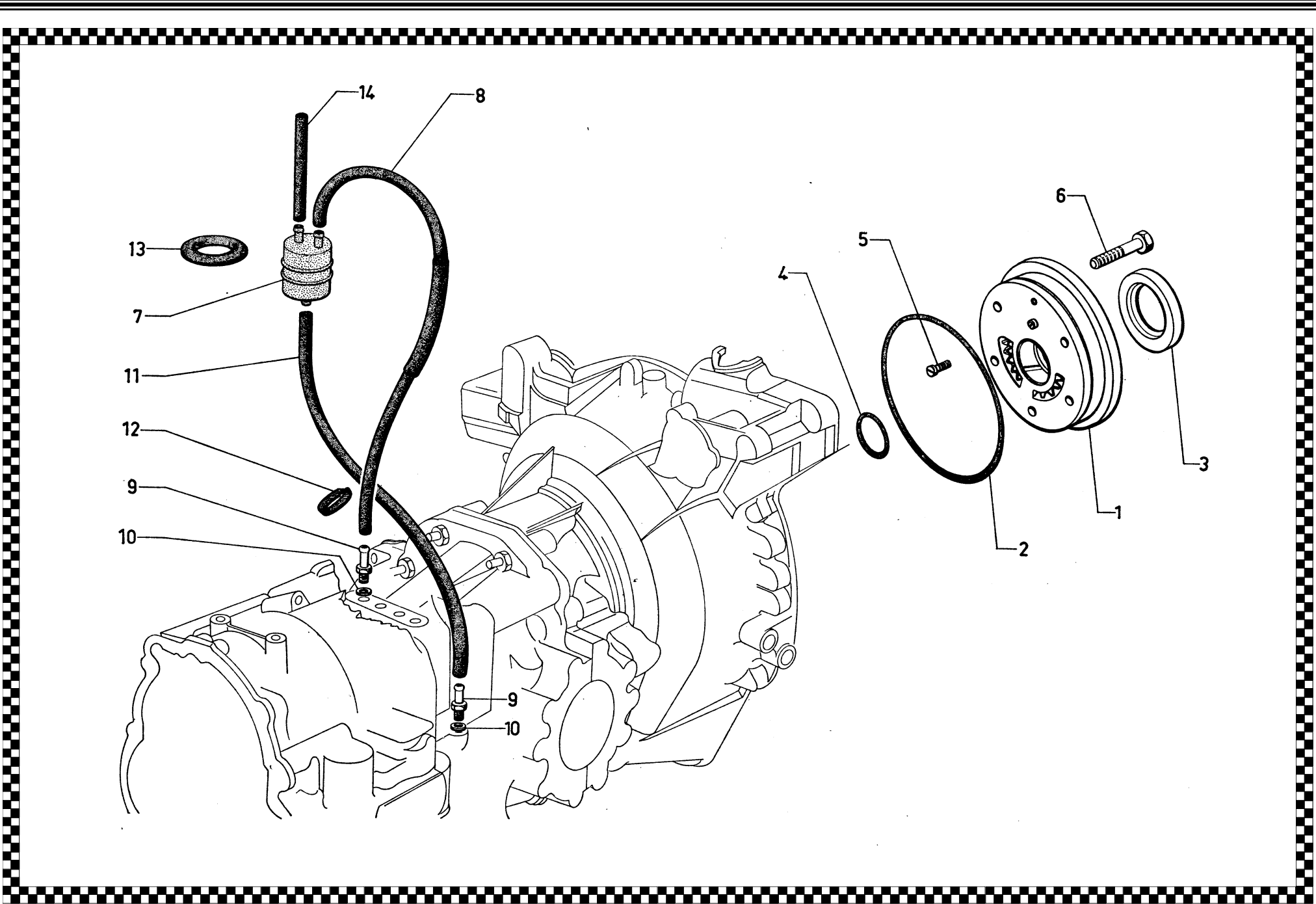
Part ID	Description						
1	Piston f. rear servo	11	Adjusting nut	21	Front braking band	31	
2	Ring seal	12	Ring seal	22	Front servo screw	32	
3	Ring seal	13	Front servo spring	23	Cam plate	33	
4	Rear servo rod	14	Circlip	24	Screw	34	
5	Rear servo lever	15	Front servo sleeve	25	Spacer	35	
6	Lever pin	16	Front servo lever	26	Cam and release spin- dle	36	
7	Rear servo spring	17	Lever screw	27	ball	37	
8	Rear servo plate	18	Lever screw spring	28	Spring (16 turns 1/2)	38	
9	Rear braking band	19	Lever pin	29	Grub screw	39	
10	Rear servo screw	20	Front servo plate	30		40	



Part ID	Description						
1	Needle thrust bearing	11	Sealing ring	21	Rear clutch cylinder	31	Flange and piston for rear clutch
2	Planet gear assy with shaft	12	Front drum assy	22	Bearing spring	32	Flange and piston for front clutch
3	Circlip	13	Sealing ring	23	Rear clutch spring	33	Sealing
4	Clutch ring assy	14	Front disc assy	24	Rear disc assy	34	Sealing
5	Central support disc	15	Pressure plate	25	Circlip	35	Sealing ring
6	Screw	16	Clutch spring	26	Clutch hub	36	Sealing ring
7	Washer	17	Spring cup	27	Hub washer	37	
8	Planet gear shaft	18	Circlip	28	Shaft with flange	38	
9	Sealing ring	19	Washer	29	Bush and circlip	39	
10	Needle thrust bearing	20	Washer f. thrust bearing	30	Needle bearing	40	



Part ID	Description						
1	Oil pump	11	Piping	21		31	
2	Ring seal	12	Collar	22		32	
3	Sealing ring (red)	13	Elastic ring	23		33	
4	Ring seal	14	Piping	24		34	
5	Screw	15		25		35	
6	Screw	16		26		36	
7	Air-reserve tube	17		27		37	
8	Piping with wheath	18		28		38	
9	Union tube on gearbox	19		29		39	
10	Seal	20		30		40	

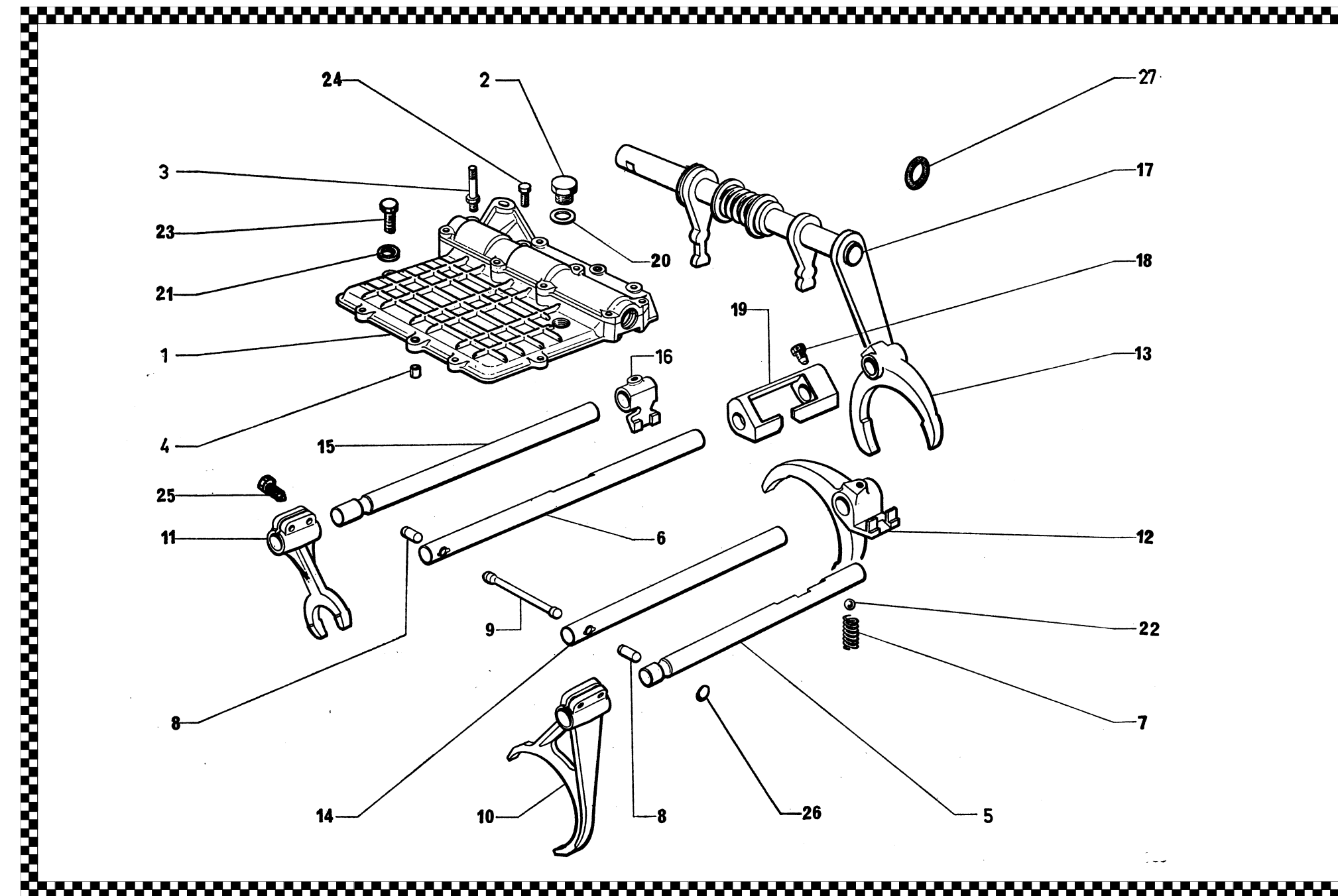


Group 1: Oil pump Air vent

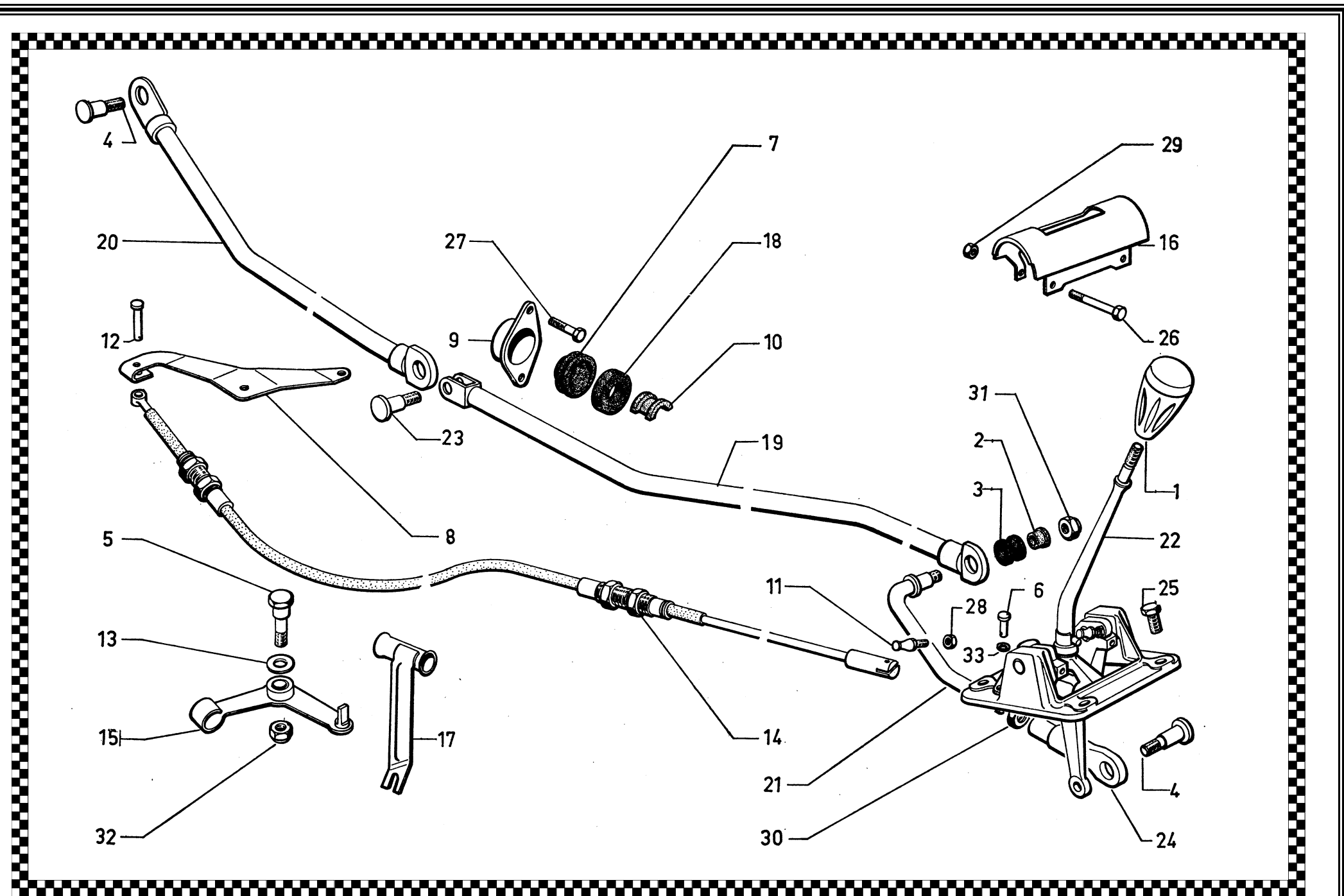
Part ID	Description						
1	Lid and cap	11	Fork (reverse gear)	21	Washer	31	
2	Filler plug	12	Fork (3rd and 4th)	22	Ball	32	
3	Shouldered screw	13	Fork (5th)	23	Screw	33	
4	Cover bush	14	Spindle for fork (3rd and 4th)	24	Screw	34	
5	Spindle (1st and 2nd)	15	Spindle for fork (reverse gear)	25	Setscrew f. forks	35	
6	Spindle (5th)	16	Drive pin f. reverse gear fork	26	Plug	36	
7	Ball spring	17	Control lever spindle	27	Ring seal for spindle marked 13	37	
8	Safety lock	18	Fork locking screw	28		38	
9	Safety lock	19	Control relay f. fork (5th)	29		39	
10	Fork (1st and 2nd)	20	Filler plug joint	30		40	



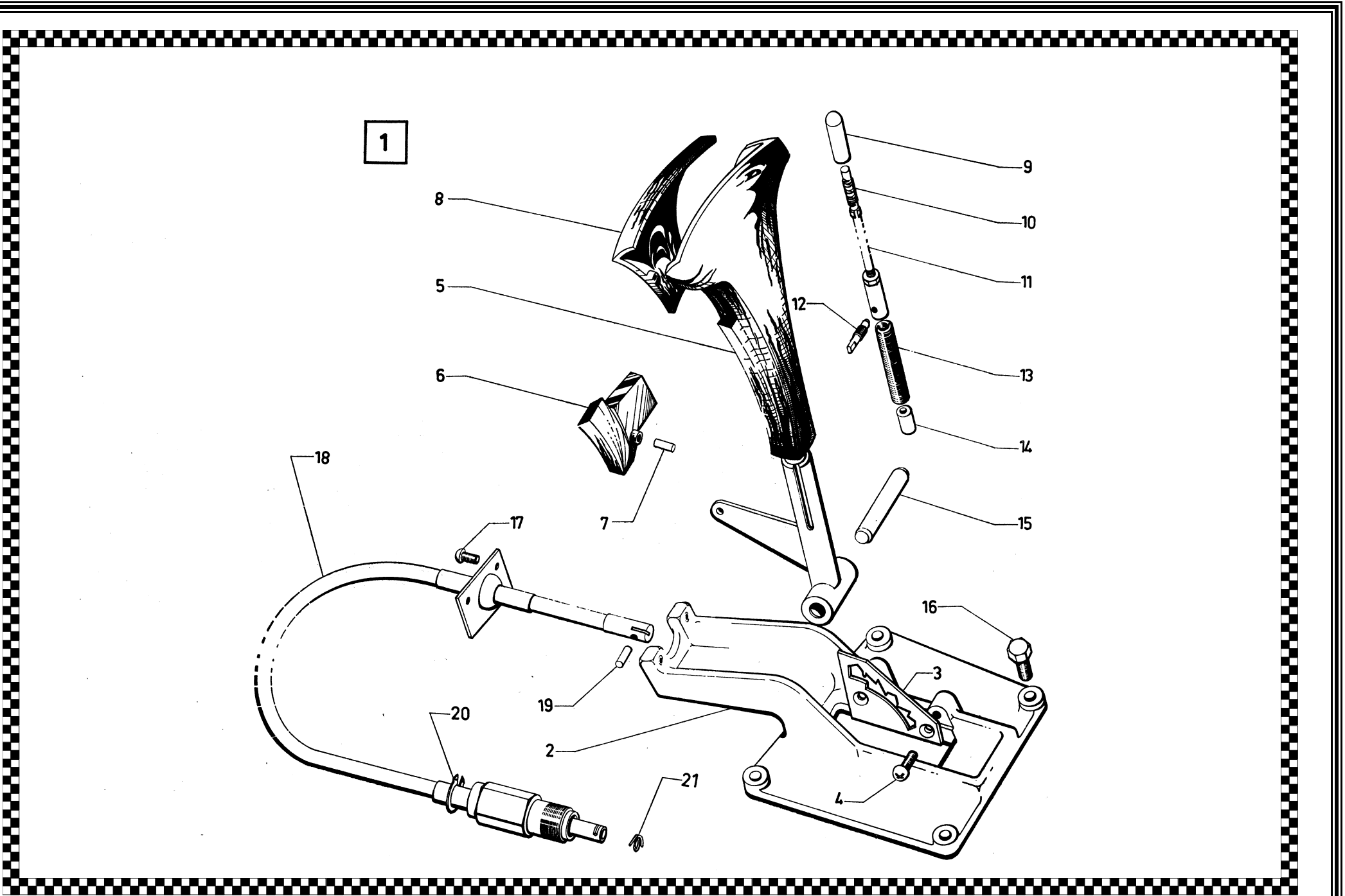
Group 1: Gearbox Lin-Spindles Forks



Part ID	Description						
1	Gear change lever	11	Adjusting stop for selector (5th)	21	Rear rod f. control lever	31	Nut Nylstop
2	Half bush	12	Pin	22	Bracket f. control lever	32	Nut Nylstop
3	Rubber bush	13	Washer	23	Union pin betw. Front rod a. inter. rod	33	Washer (anti rattle)
4	Pin	14	Selector cable	24	Adjusting terminal for rear rod	34	
5	Pin for selector bell crank lever	15	Lever f. selector relay	25	Screw f. support	35	
6	Pin	16	Embellisher	26	Screw for protector	36	
7	Dust cover on rod	17	Guide for cable	27	Screw	37	
8	Relay bracket	18	Flexible bush	28	Stop nut	38	
9	Bearing support	19	Intermediate rod	29	Screw for protector	39	
10	Half bearing	20	Front rod	30	nut	40	

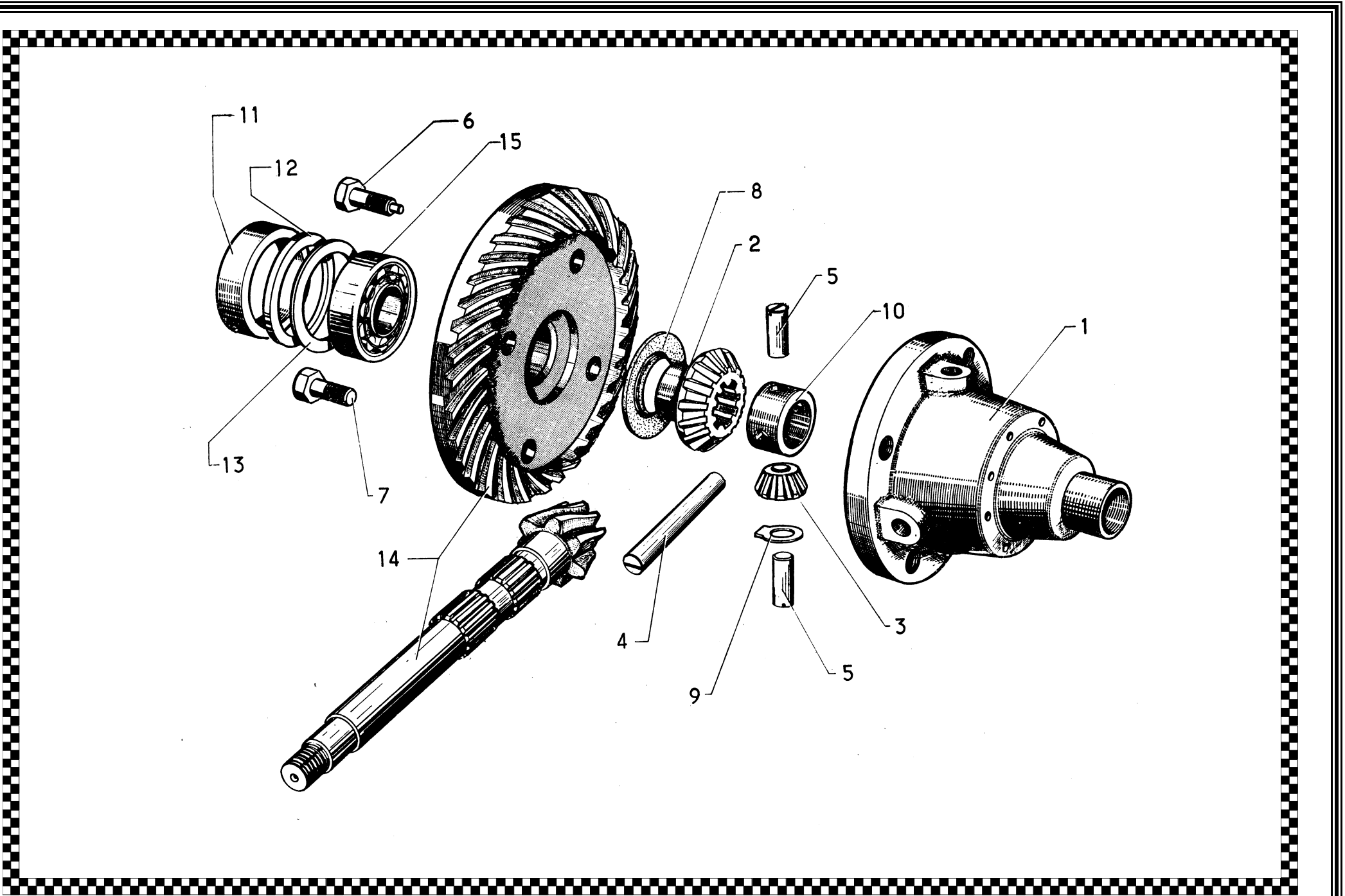


Part ID	Description						
1	Support with lever control	11	Rod and guide assy	21	Stop ring	31	
2	Support	12	Bolt	22		32	
3	Control gate	13	Spring	23		33	
4	Screw	14	Pad	24		34	
5	Lever with know	15	Pin	25		35	
6	Tappet	16	Screw	26		36	
7	Pin	17	Screw	27		37	
8	Cover	18	Cable	28		38	
9	Rod guide	19	Pin	29		39	
10	spring	20	Circlip	30		40	



Group 1: Gear change control

Part ID	Description					
1	Housing	11	Distance piece	21	31	
2	Planet wheel (16 teeth)	12	Distance washer	22	32	
3	Satellite (10 teeth)	13	Adjusting washer	23	33	
4	Satellite spindle	14	Crown wheel a. pinion	24	34	
5	Satellite spindle	15	Roller bearing	25	35	
6	Screw with dowel for satellite spindle	16		26	36	
7	Crown wheel screw	17		27	37	
8	Planet wheel washer	18		28	38	
9	Satellite gear washer	19		29	39	
10	Crosshead bush	20		30	40	



Group 1: Gearbox Differential

